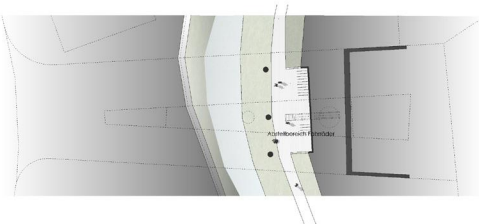
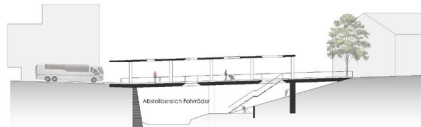


Schwarzplan_M 1:2000 ▲



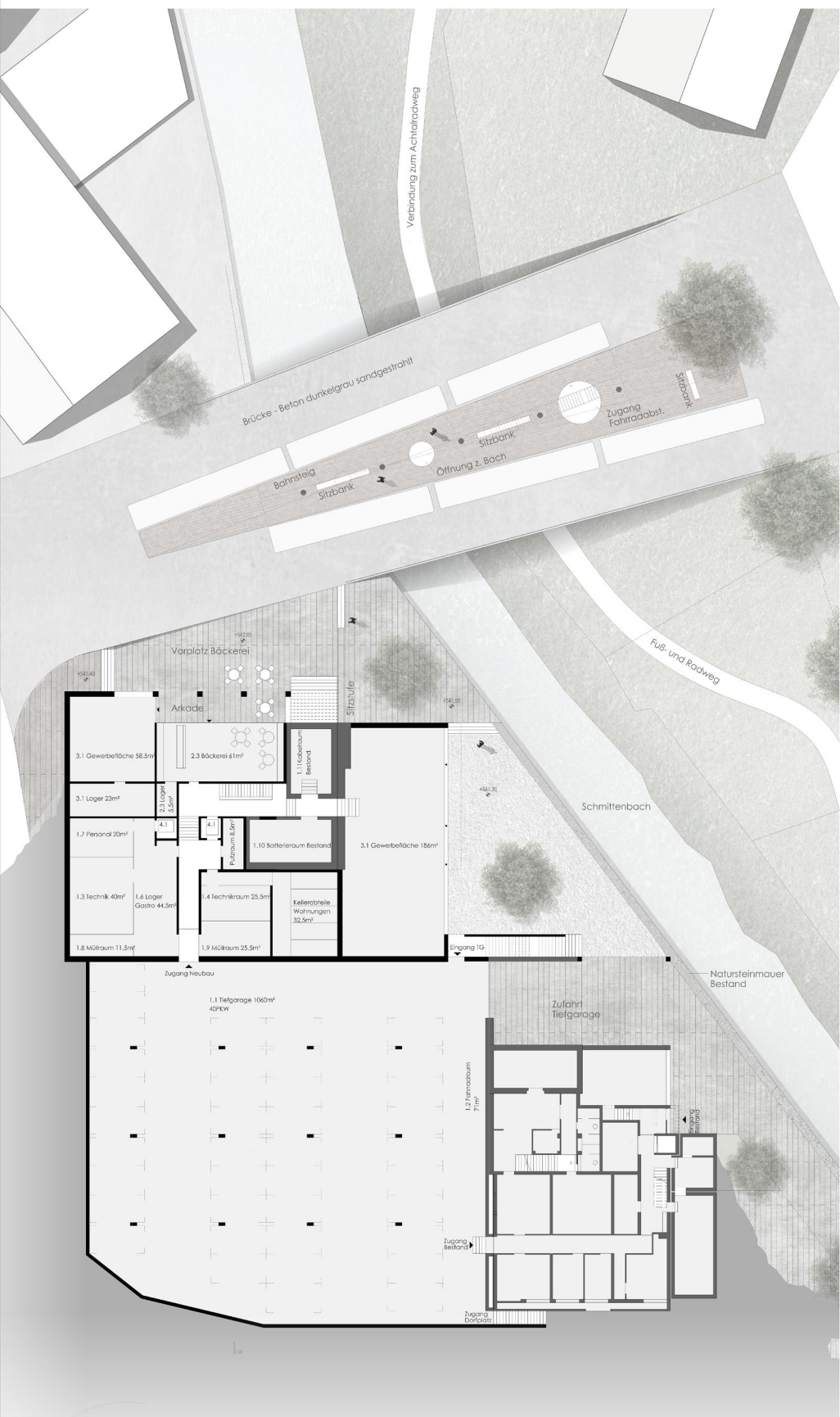
Grundriss Brücke M 1:500



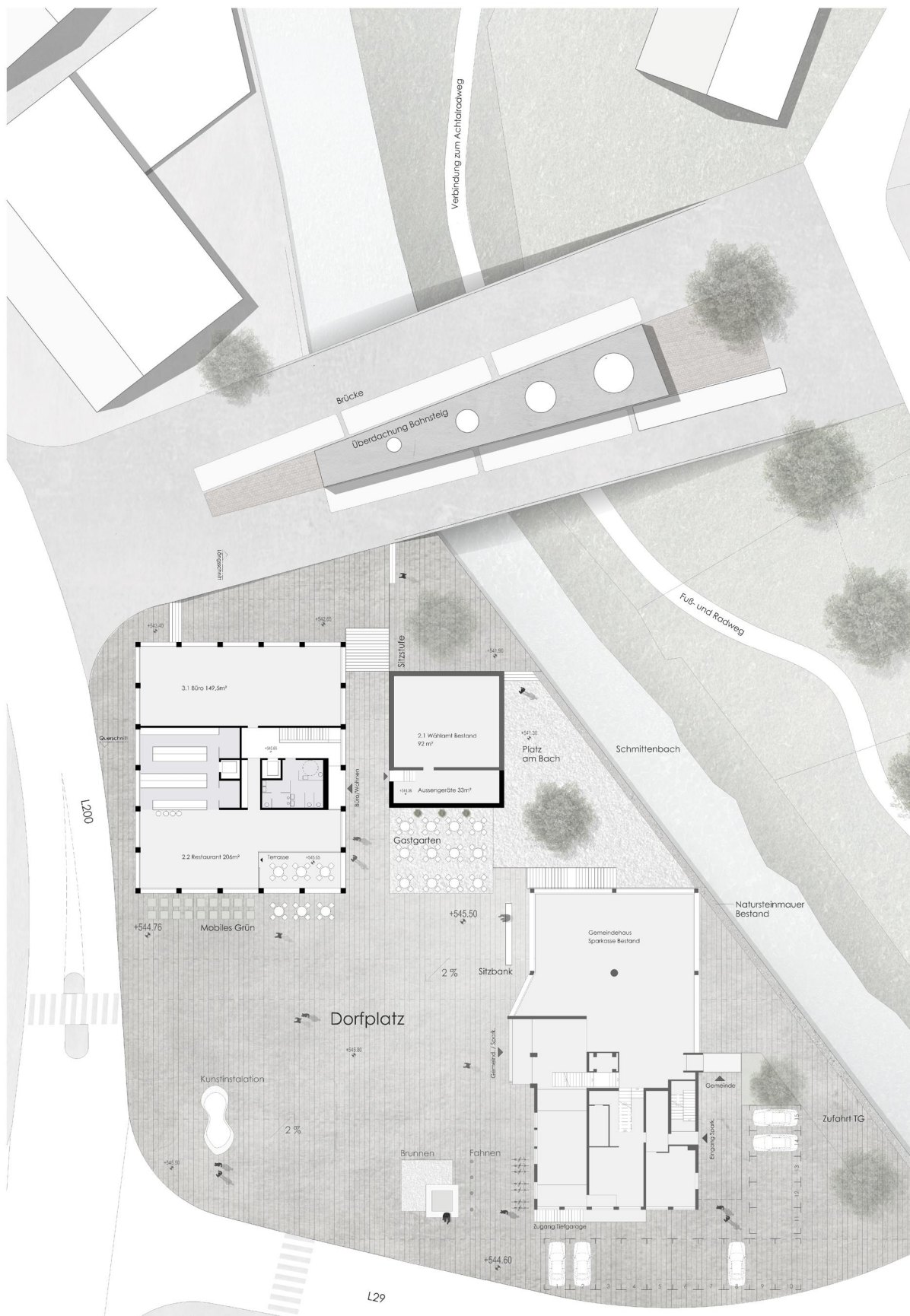
Längsschnitt Brücke M 1:500

	Fassade: Sichtbeton dunkelgrau eingefärbt, glatt		Platzbelag: heimischer Kalksandstein
	Fassaden Paneele: Eiche natur		Platzbelag am Bach: heimischer Kalksteinsplitt
	Fassaden Wahlamt: Edelstahl poliert, spiegelnd		Platzbelag Bushaltestelle: Hartholzstöckelboden
	Brückenbelag: Beton dunkelgrau eingefärbt, sandgestrahlt		Bushaltestelle Überdachung: Sichtbeton dunkelgrau eingefärbt, glatt

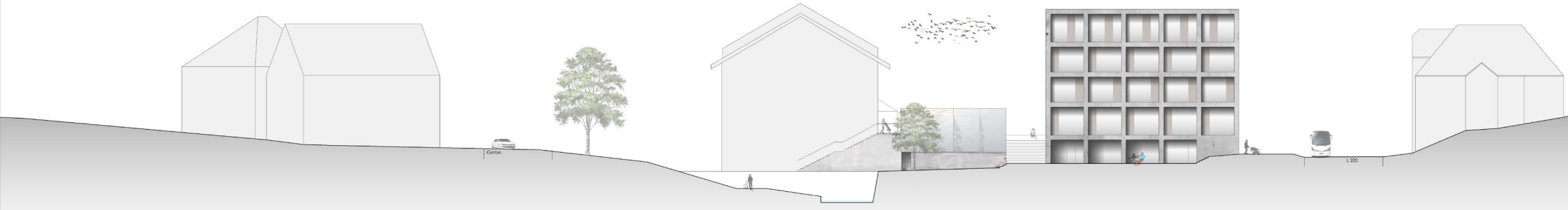
Materialisierung



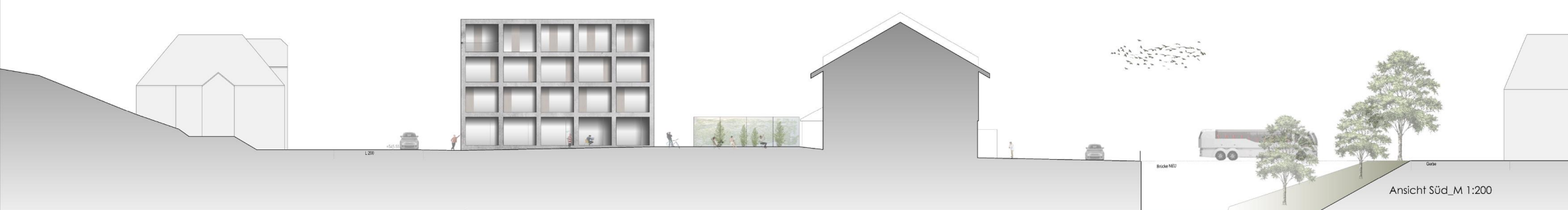
Grundriss UG_M 1:200 ▲



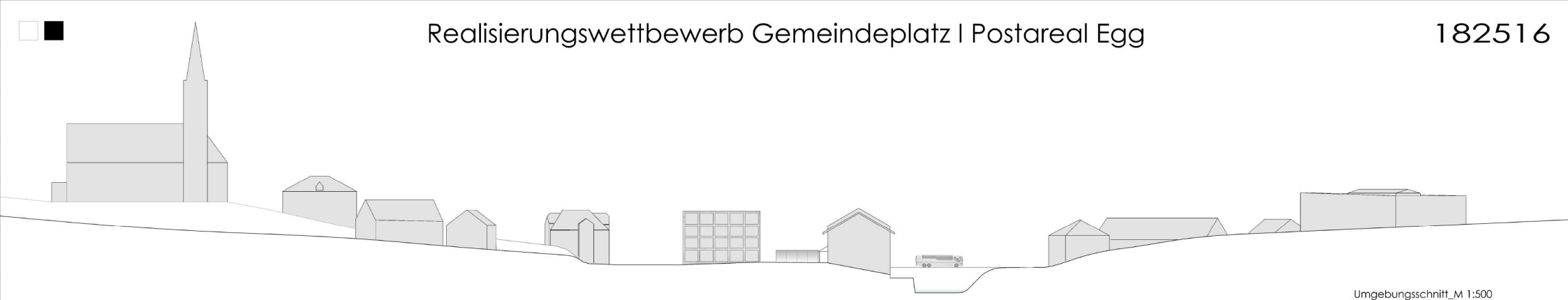
Grundriss EG_M 1:200 ▲



Ansicht Nord-Brücke M 1:200



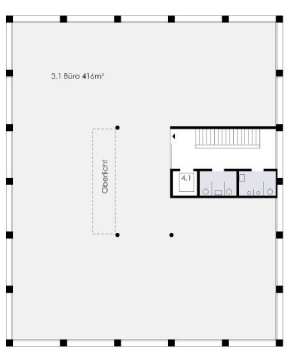
Ansicht Süd_M 1:200



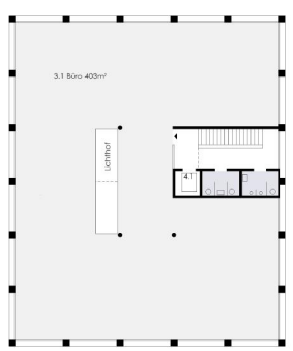
Umgebungschnitt_M 1:500



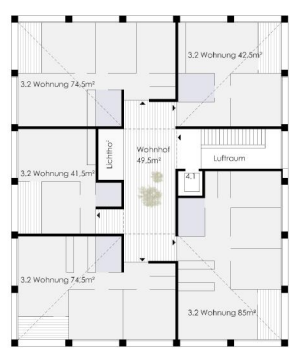
Lageplan_M 1:500 ▲



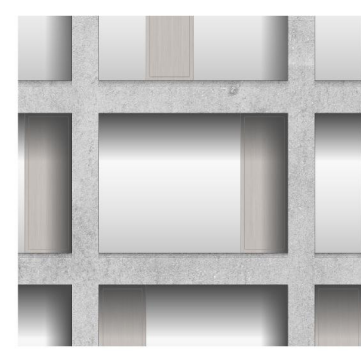
Grundriss 1.OG_M 1:200



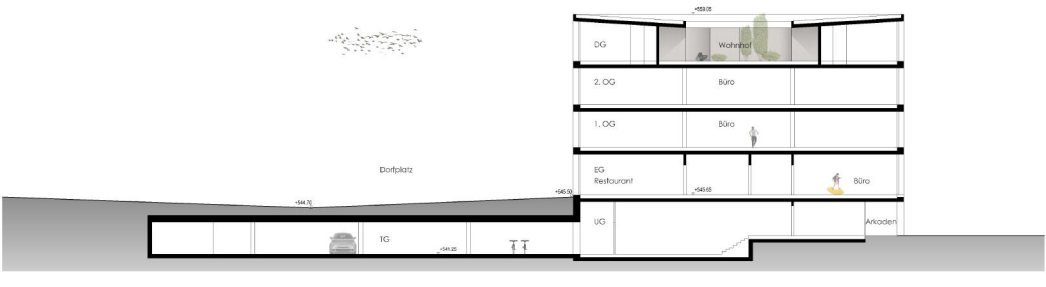
Grundriss 2.OG_M 1:200



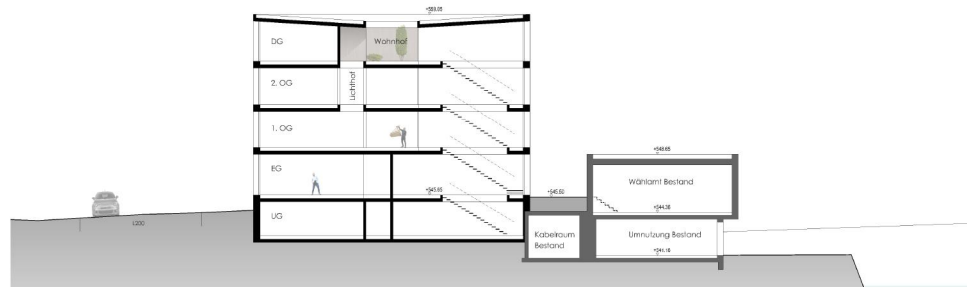
Grundriss DG_M 1:200



Teilschnitt und Fassadenschnitt_M1:50



Längsschnitt_M 1:200



Querschnitt_M 1:200



Ansicht Ost_M1:200



Ansicht West_M 1:200